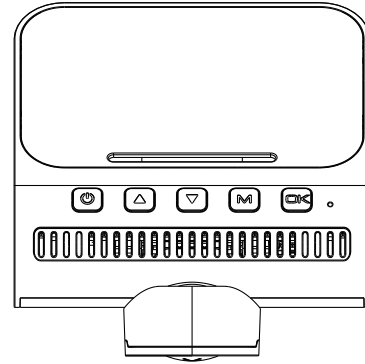


LINGDU

✉ service@lingdu.us
Response in just 12 hours



Product | Car Dashcam
Manufacturer | Dongguan Lingdu Electronic Technology Co., Ltd
Address | 1 Longcheng Street, Qingxi Town, Dongguan City,
Guangdong Province, China
Product Warranty | One-Year Limited Warranty
Customer Support | service@lingdu.us

www.lingdu.us



V820

User Manual

Model: V820

We Create the Technologies

Table Of Contents

1. Customer Service	02
2. In the Box	03
3. Specification	04
4. Product Diagram	06
5. Buttons And Functions	08
6. Installation.....	09
7. Playing Video Files Using Your Smartphone.....	11
8. General Setting	21
9. Live Video with 4G Function(It should be connected to LNDU 4G box.).....	24
10.Playing Video Files Using Your Computer	30
11. Firmware Update	32
12. Voice Command.....	33
13. FAQ.....	34
14. Notice.....	36

1. Customer Service



Defective or damaged item?
Inaccurate description?
Missing parts or accessories?
Performance or quality not adequate?
Wrong item was sent?



service@lingdu.us

Response in just 12 hours

Contact us before returning the item.
We will help you resolve any issue asap.



Note:

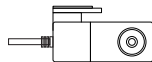
1. A 64GB microSD card is provided with the LNDU dashcam when you purchase the product. Be sure to format your microSD card with your dash cam for the first time use.
2. Please ALWAYS connect with power when using. As it is built in Super Capacitor (Only has a Lithium Metal Battery used to memorize time).

2. In The Box

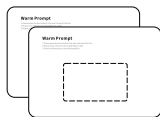
Check the box for each of the following items before installing the dash cam.



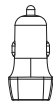
Front dash cam*1



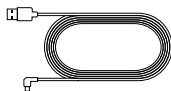
Rear camera(6M/20ft)*1



Electrostatic film*2



Car charger*1



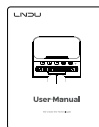
Type-c USB power cable (3.5M/12ft)*1



64GB
TF card*1



Cable clips*5
Pry tool*1



User manual*1



Note:

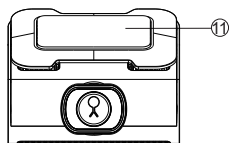
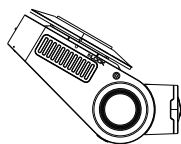
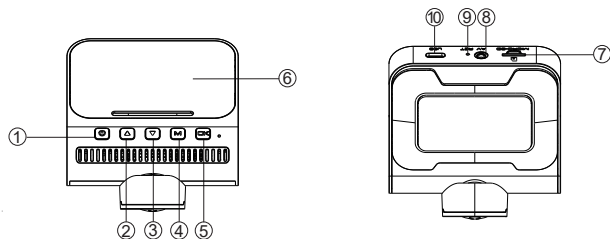
1.To improve the performance of the product, the contents of this manual are subject to change without prior notice.

3.Specification

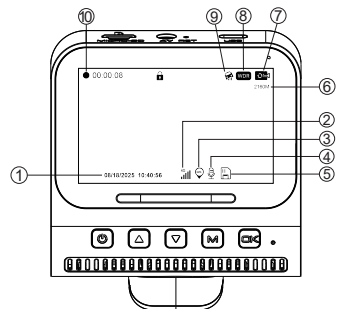
Model Name	V820
Screen Size	3 inch
Aperture	F=1.8
Color	Black
Language	Language: English, Germany, French, Spanish, Italian, Russian, Portuguese, Vietnamese, Thai, Polish, Dutch, Arabic
Video Format	MP4
Photo Format	JPG
Video Code	H.264/H.265
Video Resolution	Front Cam 4K: 3840*2160P 30FPS 2K: 2560x1440 30FPS 1080P: 1920x1080 30FPS Front+Rear cam: 4K: 3840*2160P 25FPS+ 1080P 1920*1080P 25FPS 2K: 2560*1440P 25FPS+1080P 1920*1080P 25FPS 1080P: 1920*1080P 25FPS+1080P 1920*1080P 25FPS
GPS	Built in GPS

G-sensor	Built-in
HDR	Support, dual HDR
Sony Starvis 2	Support, dual Sony Starvis 2
ADAS	Support
Bluetooth	Support
Loop Recording	Support
Time-lapse Record	Support(1 frame per second,fast video playback)
Wifi/Application	Support 5G Wifi, LINGDU Application
Parking Mode	Support(Only works when the dash cam is connected to 3-Lead Hardwire kit)
4G	Support (Only works when the dash cam is connected to 4G box)
Memory	Built-in
Microphone	Built-in
Speaker	Built-in
Battery	Built-in Super Capacitor
Power Interface	5V/2.5A
Operation Temperature	-10° to 65°C (14°F to 149°F)

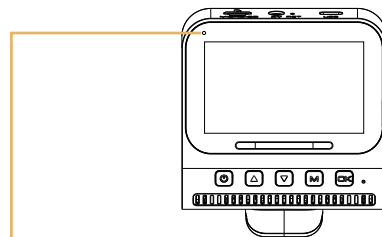
4.Product Diagram



- ① Power ② UP ③ Down ④ Mode ⑤ OK
- ⑥ Screen ⑦ TF card slot ⑧ Rear camera connection port
- ⑨ Reset ⑩ Type-c USB charging port ⑪ Mounting bracket

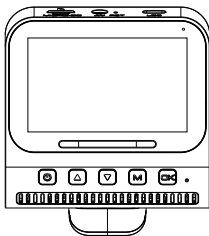


- ① Date/Time ② 4G Signal ③ GPS Indicator
- ④ Record Audio ⑤ TF card Indicator ⑥ Video Resolution
- ⑦ Loop Recording Duration ⑧ WDR ⑨ G-sensor
- ⑩ Loop Recording Timer



Blue Light	The blue light turns on when the camera is recording
Red Light	The Red light turns on when the camera is stop recording.

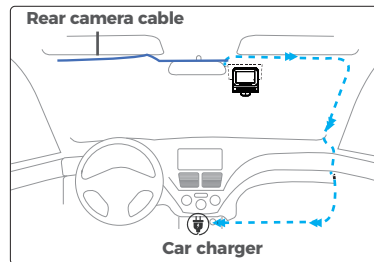
5.Buttons and Functions



Function key	Key instructions
power key	<ol style="list-style-type: none"> 1. In the shutdown state: press the power button for a short time 2. Power on state: long press to turn off 3. on state: Short press the screen to turn off/on
Up button	<ol style="list-style-type: none"> 1. Menu mode/Playback mode: Short-press upward to make a selection. 2. Dual-channel picture-in-picture switch: Short-press to switch the picture-in-picture display: Front large & Rear small -> Front small & Rear large -> Front single -> Rear single -cycle switch 3. During recording, long-press the upward key to lock the current video.
Down button	<ol style="list-style-type: none"> 1. In menu mode: Short-press downward to make a selection. 2. In recording mode: Short-press to turn on/off recording. 3. In playback mode: Short-press downward to make a selection. 4. Long-press the downward key to turn on/off the WIFI function.
M key	<ol style="list-style-type: none"> 1. Recording mode: Short-press once to enter menu settings; long-press to switch to playback mode. 2. In Video/photo/replay mode: Short press to switch to replay settings. 3. Menu mode: Short-press to return to the previous-level interface.
OK key	<ol style="list-style-type: none"> 1. In recording mode: Short-press to start recording, short-press again to stop recording. 2. In menu mode: It serves as the setting confirmation key. 3. In playback mode: Short-press to play back files.

6.Installation

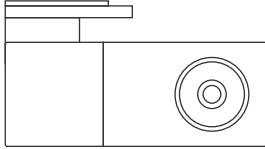
Install the front and atthetop of the front windshield. Remove any foreign matter and clean and dry the wind shield before installation. Install the Rear Camera(IP68 waterproof) outside the car.



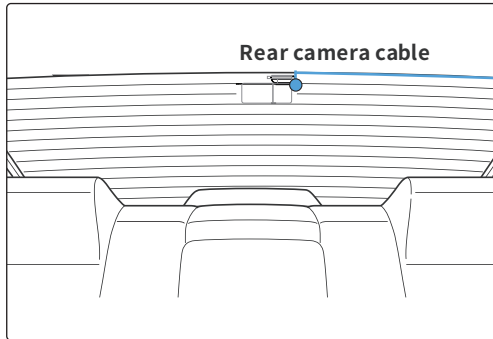
1. Correctly connect the magnetic bracket and V820 dash cam through the strong magnetic attraction. Plug the cabin camera.
2. Insert the microSD card into the microSD slot of the dash cam and format your SD card for the first time use.
3. Stick the electrostatic film on your windshield,then stick the magnetic bracket on top of the electrostatic film.
4. Turn off the car engine.
5. Connect the hardwire kit to the Type-CUSB port ofthe magnetic bracket. Use the pry tool to lift the edges of the windshield trim/molding and tuck in the power cord.
6. Adjust the angle of the lens by the bracket of the front camera. We recommend pointing the lens slightly downwards(≈10° below horizontal),so as to record video with a 6:4 road to background ratio.
7. Turn on the engine.The dashcam will power up and start recording.Video files are stored on the microSD card. When the micro SD card fills up,the newest video files will start to replace the oldest video files (called loop recording)-so you will always have the most recent videofiles.

7. Playing Video Files Using Your Smartphone

8. Peel off the protective film from the double-sided tape and attach the rear camera to the rear windshield. Adjust the angle of the lens by rotating the body of the rear camera, connect the front camera and the rear camera.

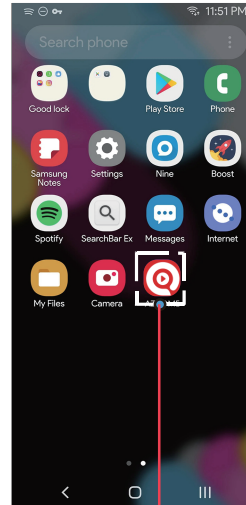


9. Use the pry tool to lift the edges of the rubber window sealing and molding and tuck in the rear camera connection cable.



10. Plug the cigarette lighter power cable into the cigarette lighter socket and the front camera. Use the pry tool to lift the edges of the windshield trim/molding and tuck in the power cord.

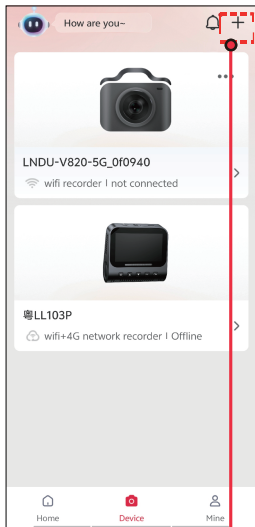
8.1 Check real-time video using your smartphone



Scan QR code to
download LINGDU APP

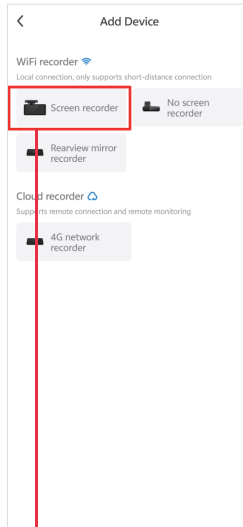
1

Search for the LINGDU app in the Google Play Store or Apple App Store and install it on your smartphone.



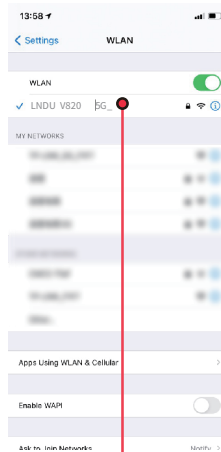
2

2. Enter the APP page and check the "+" to add V820 device



3

3. Choose Screen recorder to add V820 device. Pls kindly note that 4G box is required when adding V820 as 4G network recorder.



4

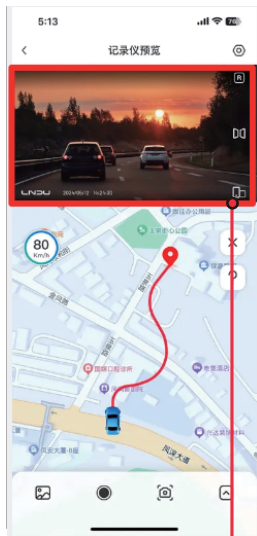
4. Go to phone's settings >WiFi> Select WiFi of the dash cam. After it's connected to the WiFi, it will say "No Internet Connection which was normal. Because dash cam WiFi is ONLY for video/photo transfer function. NOT made to broadcast footage over the cloud or internet, please ignore the prompt.

WiFi Name SSID: V820 *****
Default PASSWORD:12345678



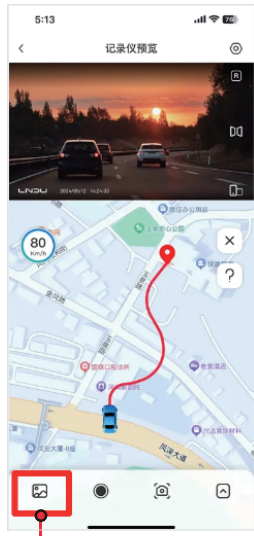
5

5. There will show dash cam model V820 when connect successfully. Press "->" to check Real-time Video to live video preview interface.



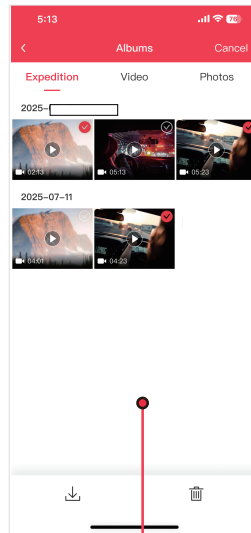
6

6. Now you can view the video currently being recorded real time by connecting your smartphone to the dash cam via Wifi Direct.



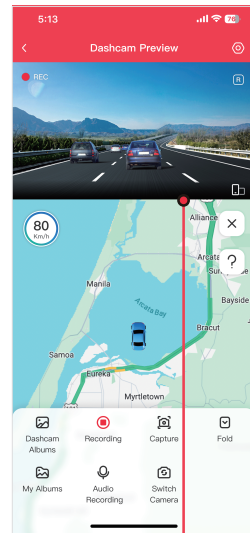
7

7. Please stop recording first, then press the button "Dashcam Albums" to get Photo, Video, Emergency files.



8

8. Select the video files to download into your smartphone



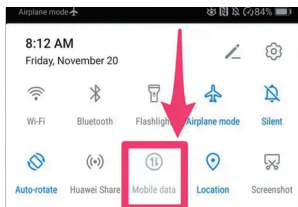
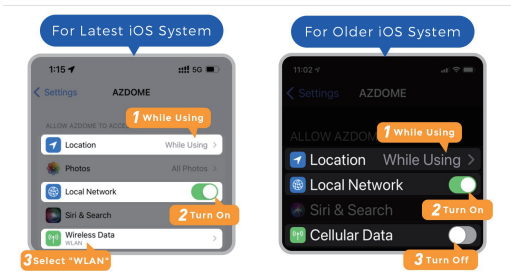
9

9. Then you can find these downloaded videofiles in APP original interface menu named 'My Albums'

The app won't show the live video on your phone. It only shows a picture of the beach?

The cellular data will cause the live video not to be viewed. If the APP won't show the live video, please disable the 'LINGDU' cellular data of your phone. Sure that the Local Network of the 'LINGDU' is turned on.

1. For Latest iOS System: Setting→LINGDU→Click 'Wireless Data'→Select 'WLAN' .
2. For Older iOS System: Setting→LINGDU→Disable the 'Cellular Data'.



Note:

1. WiFi Direct lets you directly connect your smartphone to your dash cam via WiFi within a range of 10FT.
2. Once it is connected to the LINGDU APP it will automatically update the date/time.
3. The LINGDU is available for devices running Android 5.0 and higher, or iOS 9.0 and higher.

What is a WiFi Feature?

The WiFi feature has been designed so you can pair your dash camera wirelessly with your smartphone and access your recording instantly from the dash cam. Here you can view, download and share your videos easily with your friends and family. Just like how you would connect your Bluetooth speaker to your smartphone for wireless music play, the same way dash cameras use WiFi signal (instead of a Bluetooth) to pair your smartphone with LNDU V820.

What is the WiFi Range?

The WiFi signal range is about 10FT when there are NO obstructions in the middle. Please NOTE that just like your home WiFi network, you don't have WiFi signal outside your home, the same way, WiFi range is 10FT from this small device.

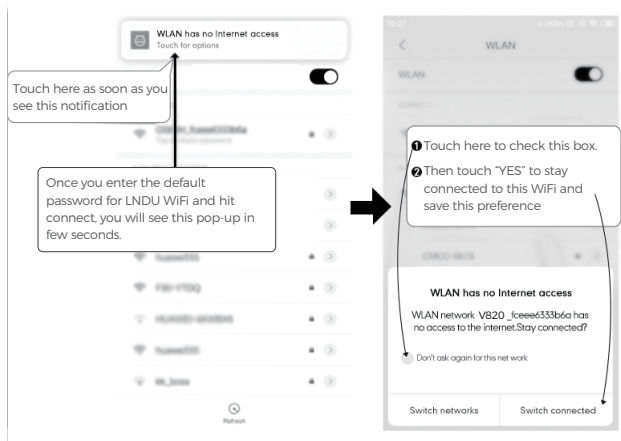
For Android phones:

When installing the LINGDU APP, it will have two pop-up prompts, select 'While using the APP' to allow LNDU V820 to access this device's location, and select 'Allow' to allow LNDU to access photos and media on your device.

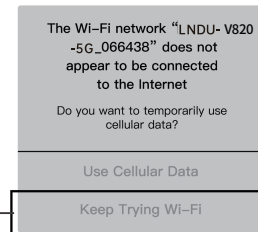
There is one extra step you will have to take for the first time.

Once you connect to the WiFi of V820, it will say 'No Internet'.

Which is fine. Wait about 10-15 seconds until you see the below pop up or notification. You just have to tap on the pop up notification that will show up in few seconds to select that you still want to stay connected even though there is NO Internet. Once you select this OK, you are set to go.



For iPhone:



If you get this pop up for your iPhone while using WiFi feature, make sure to tap on 'Keep Trying WiFi'. Otherwise the camera will get disconnected from the WiFi and then you will have to forget the LNDU WiFi and then start to pair again to make it work again.

Calibrate Date/Time

LNDU V820 is built-in GPS, need to set Timezone first in APP so that the video date/time stamp will be correct. Please connect to LINGDU APP, using the function menu to set Timezone.

UK Time Zones	British Summer Time	British Winter Time
	GMT/UTC +1	GMT/UTC ±0

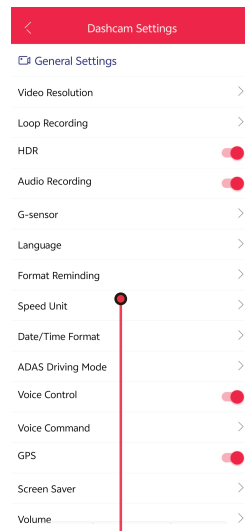
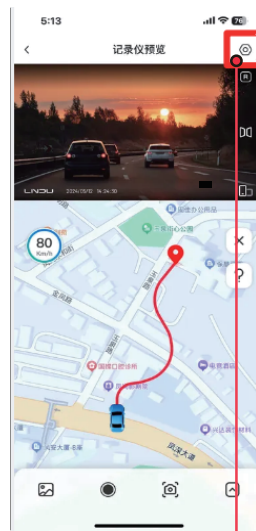
USA Time Zones	When Daylight Savings Ends Nov - March	When Daylight Savings Begins March - Nov
Hawaii	GMT (-10:00)	
Alaska	GMT (-9:00)	GMT (-8:00)
Pacific Time Zone	GMT (-8:00)	GMT (-7:00)
Mountain Time Zone	GMT (-7:00)	GMT (-6:00)
Central Time Zone	GMT (-6:00)	GMT (-5:00)
Eastern Time Zone	GMT (-5:00)	GMT (-4:00)

Format Micro-SD Card

There are two ways to format Micro-SD card

1. Press and hold WiFi button for 8 seconds to format and default settings, you will hear sound "di" when format successfully.
2. Please connect to LINGDU APP, using the function menu named "Format" to do.

8. General Setting



1
Go to Dashcam Preview interface. Please STOP recording first, then press the settings icon.

2
Select what you need to set.

Video Settings

Video Resolution

Allow to choose the desired video resolution and fps(frames per second).

- 3840x2160P 25fps+ 1920x1080P 25fps(Default)
- 2560x1440P 25fps+ 1920x1080P 25fps
- 2304 x 1296P 25fps+ 1920x1080P 25fps
- 1920 x 1080P 25fps+ 1920x1080P 25fps

Loop Recording-1 min(Default) / 2mins / 3mins

Here select the length(1/2/3 min) of each video clip for the loop recording. This function allows the dash cam to continuously record.

Please notice: The dash cam will keep deleting the oldest files automatically when memory card gets full so that it can keep recording over and over.

AudioRecording-On(Default)/Off

The dashcam has built-in microphone to record audio with video. You can choose to record mute video by choosing OFF.

G-Sensor-Off/Low/MID(Default)/High

G-sensor is a 3-axis impact gravitational accelerometer, designed to detect physical and gravitational forces on the dash cam. Once G-sensor has been triggered due to physical or gravitational impact force on the camera, the current video file will be locked as an emergency file so it won't be deleted by loop cycle function. The higher the G-Sensor sensitivity is, the less force will be needed to trigger automatic file protection.

Parking Mode

This function will ONLY work when 3-Lead Hardwire Kit is installed properly, the output current of Hardwire Kit needs to reach 2.5A. Then select parking mode. This parking mode has two options to choose from.



Note:

1. Please download and update the latest firmware from the manual.
2. Custom-designed Type-c 3-Lead Hardwire Kit is required to use this new feature. Not included in the packaging.

*Time-Lapse Parking Mode:

1. When you turn OFF the car's engine and turn the key to the lock position. Then the camera will STOP the continuous video recording and it will go into the timelapse 1fps recording mode automatically.
2. Now while this timelapse is being recorded, if someone hits your car and if the impact reaches the set G-Sensor level, then the camera will start to record 1-min continuous video, save & lock that video in Event folder > then return to the timelapse 1fps recording.
3. Now when you start your car for the next time, the camera will automatically STOP the timelapse parking mode. Then it will go into normal video mode automatically to start the continuous video recording.

9. Playing Video Files with 4G function (It should be connected to LNDU 4G box.)

1. When the V820 is connected to the LNDU 4G box, a 4G signal will appear on the device's startup interface.



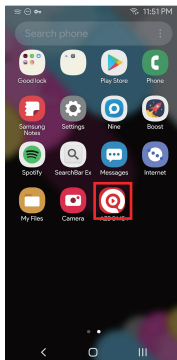
2. Enter "M" button, select the 4G option to obtain IMEI code information.



3. IMEI information can be obtained via the IMEI Code or by scanning the IMEI QR code.

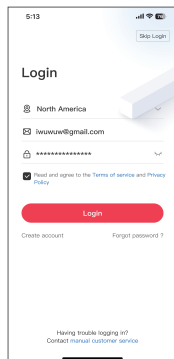


4. Search for the LINGDU app in the Google Play Store or Apple APP Store and install it on your smartphone.

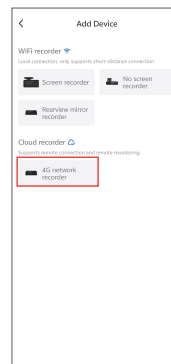


Scan QR code to
download LINGDU APP

5. Register information on LINGDU APP



6. Choose 4G networked recorder



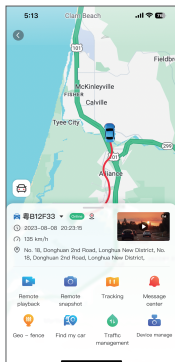
7. Enter IMEI Code or Scan QR Code to bind the device information.



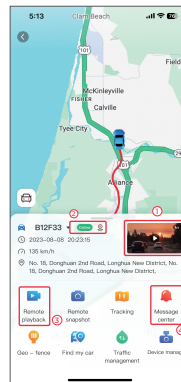
8. Enter the license plate information



9. Get access to the 4G function interface

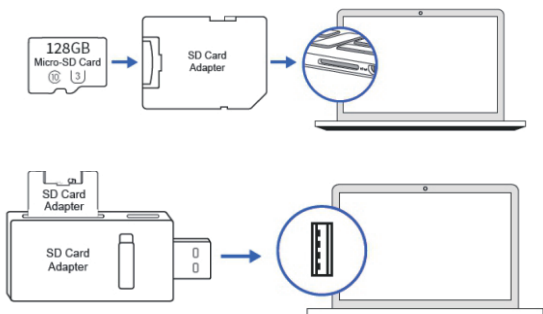


1. After clicking, it enters the live - broadcast screen.
2. Displays the status of the recorder device.
3. After clicking, it performs remote snapshot.
4. Message Center



10. Playing Video Files Using Your Computer

1. Remove the microSD card from the dashcam.
2. Insert the card into the microSD card reader and connect it to a computer.

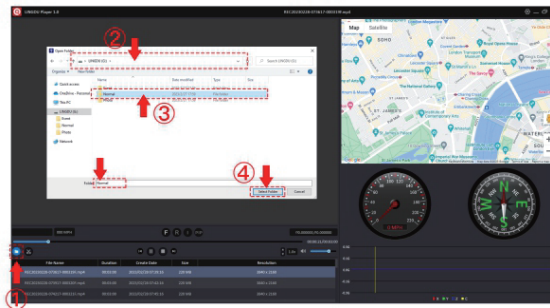


3. Download LNDU GPS Player from www.lingdu.us > **Support** > **Downloads** and install it on your computer.
3. Install the LNDU GPS Player on your computer. (Note: Please close or ignore the prompt of the anti-virus software, we confirm that it will not bring any security impact to your computer.)
4. You can click the 'Open Files' button to browse and select the Video or Event folder of the microSD card on the LNDU GPS Player. It will show all files in the Normal or Event or Parking folder. Or you can also drag the video files directly to the launcher screen.

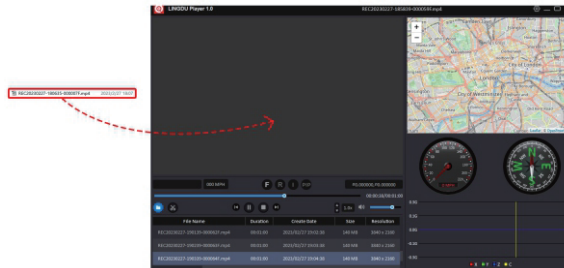
5. There are two ways to play video.

A, Click File-Open icon to choose the folder which you want to play, click to start play.

(Note that you can ONLY select one folder to play and see no video files)

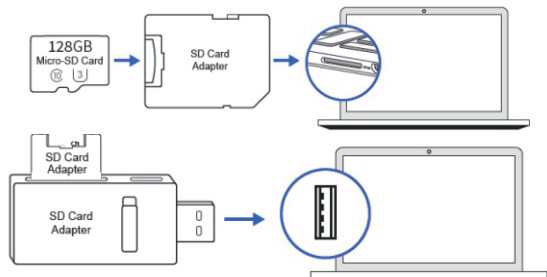


B, Select from 'My Computer' and find the memory card disk, choose the video file you want to play, you can drag and drop the file directly to the player. You can get the GPS information on the player.



11. Firmware Update

1.Remove the microSD card from the dashcam.2.Insert the card into the microSD card reader and connect it to a computer.



3. Download the latest V820 Firmware from www.lingdu.us > **Support > Downloads** on your computer.

4. Unzip the downloaded firmware (Zip file) and copy all firmware files to the root directory of microSD card.

5. Connect the camera to the car charger to start the firmware update process. You should see the red light will be solid which means your V820 dash camera is updating the new firmware.

Please NO TE:

The firmware update may take up to about 1 mins. So please be patient. Make sure the POWER does NOT get disconnected while the firmware is being updated. Once the firmware is updated, the camera will turn ON automatically.

6. You can turn on and check the latest firmware version by going into the APP's settings> Firmware Version.

12. Voice Prompts

Prompt Voice	Description
Emergency Video	During recording once G-Sensor triggered
WiFi ON	Default ON, after powered on, say it
WiFi OFF	Press and hold Wi-Fi button for 3s to switch off, say it
Memory card error	Wrong/bad/fake memory card
Recording started	After powered on and boot ringtone /operate via App, say it
Recording stopped	Operate via App, say it
Sound as 'Click'	Take picture via App, say it
Format Successfully	Format memory card successfully
Format Failed	Format memory card failed
2.4G WiFi	Default 5G, shortly press three (3) times switch to 2.4G Wi-Fi
5G WiFi	Shortly press three (3) times switch to 5G Wi-Fi

13. Q&A

Q1: Camera turns ON /OFF automatically?

Ensure that the output current can reach 5V/2.5A and use our car charger. And ensure that the rear camera are connected correctly. It is to improve stability that the dashcam reboots automatically once if it detects that there are different cameras connected.

Q2: Videolmage is blurred?

Remove the protective lens film, clean the lens, make sure the windshield is clean and clear of grease, dirt, and debris.

Q3: Camera gets HOT?

It is normal for your camera to run slightly hot. Due to video being recorded at high speed, the dash cam may be hot during using. (No more than 158°F/70°C).

Q4: No power to my Dash Cam but it works upon my computer?

The cigarette power cable is not working. Inspect the fuse in the Car Power Cable plug. If the fuse is found to be blown, inspect the power cable for damage which may have caused the fuse to blow.

Q5: The sound is not synchronised with video during playback?

The Codecs upon your PC may not be compatible or the latest standard. Download the latest LINGDU GPS Player from www.lingdu.us > Support > Downloads.

Q6: Video Files cannot be played on my computer?

The video files from the Dash Cam are in MP4 format and may not be compatible with your PC if suitable playback software is not installed.

Q7: Video has no sound?

Ensure that 'Record Audio' setting is turned ON. Ensure that 'Timelapse Record' setting is turned OFF within the APP Menu.

Q8: Video is blurred?


The Dash Cam has a minimum focal range of around 2 meters. Objects closer than this are likely to become blurred.


Q9: Voice prompt Memory Error?

Using unqualified SD or third party cards can affect dashcam's performance and in some cases, force the dashcam to reboot randomly during recording. If it still can not work normally, it should be that the TF card is unqualified and can not meet the recording requirements of the dash cam. Please contact us to get a new memory card.

14. Notice

 This product complies with the radio interface requirements of the European Community.

 This symbol means the product must not be discarded as household waste, and should be delivered to an appropriate and recycling helps protect natural resources, human health and the environment. For more information on disposal and recycling of this product, contact your local municipality, disposal service, or the shop where you bought this product.

 Changes or modifications not expressly approved by the party responsible for compliance could void the user's authority to operate the equipment.

This equipment has been tested and found to comply with the limits for a Class B digital device, pursuant to Part 15 of the FCC Rules. These limits are designed to provide reasonable protection against harmful interference in a residential installation. This equipment generates, uses and can radiate radio frequency energy and, if not installed and used in accordance with the instructions, may cause harmful interference to radio communications. However, there is no guarantee that interference will not occur in a particular installation.

If this equipment does cause harmful interference to radio or television reception, which can be determined by turning the equipment off and on, the user is encouraged to try to correct the interference by one or more of the following measures:

- Reorient or relocate the receiving antenna.
- Increase the separation between the equipment and receiver.
- Connect the equipment into an outlet on a circuit different from that to which the receiver is connected.
- Consult the dealer or an experienced radio/TV technician for help.

This device complies with Part 15 of the FCC Rules.

Operation is subject to the following two conditions: (1) this device may not cause harmful interference, and (2) this device must accept any interference received, including interference that may cause undesired operation.

This equipment complies with FCC radiation exposure limits set forth for an uncontrolled environment. This equipment should be installed and operated with a minimum distance of 20cm between the radiator & your body. This transmitter must not be co-located or operating in conjunction with any other antenna or transmitter.